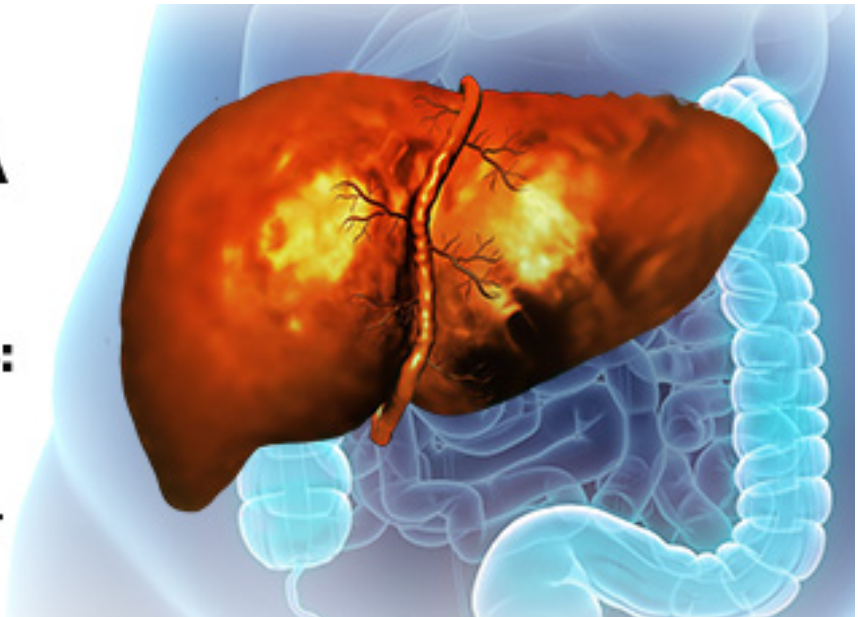


# ENTERING A **NEW ERA** IN METABOLIC DYSFUNCTION- ASSOCIATED STEATOHEPATITIS:

Examining the  
Clinical Implications  
of Emerging Disease-  
Specific Therapies



## Resources

### Guidelines

Cusi K, Isaacs S, Barb D, et al. American Association of Clinical Endocrinology clinical practice guideline for the diagnosis and management of nonalcoholic fatty liver disease in primary care and endocrinology clinical settings: co-sponsored by the American Association for the Study of Liver Diseases (AASLD). *Endocr Pract.* 2022;28:528-562. doi:10.1016/j.eprac.2022.03.010

European Association for the Study of the Liver. EASL Clinical Practice Guidelines on non-invasive tests for evaluation of liver disease severity and prognosis - 2021 update. *J Hepatol.* 2021;75:659-689. doi:10.1016/j.jhep.2021.05.025

Kanwal F, Shubrook JH, Adams LA, et al. Clinical care pathway for the risk stratification and management of patients with nonalcoholic fatty liver disease. *Gastroenterology.* 2021;161:1657-1669. doi:10.1053/j.gastro.2021.07.049

Rinella ME, Neuschwander-Tetri BA, Siddiqui MS, et al. AASLD Practice Guidance on the clinical assessment and management of nonalcoholic fatty liver disease. *Hepatology.* 2023;77:1797-1835. doi:10.1097/HEP.0000000000000323

### Patient Resources

American Liver Foundation: Nonalcoholic Fatty Liver Disease (NAFLD)  
<https://liverfoundation.org/for-patients/about-the-liver/diseases-of-the-liver/non-alcoholic-fatty-liver-disease/>

Fatty Liver Foundation (FLF)  
<https://www.fattyliverfoundation.org/>

Global Liver Institute  
<https://globalliver.org/>

NASH KNOWledge  
<https://nash-now.org/>

Non-alcoholic fatty liver disease: a patient guideline  
Francque SM, Marchesini G, Kautz A, et al. *JHEP Rep.* 2021;3:100322.  
doi:10.1016/j.jhepr.2021.100322